

GENERAL CONTRACTORS ASSOCIATION **Construction Update**



August 22, 2017
Mark Yonamine, Deputy Director

Department of Design and Construction
City and County of Honolulu



Purpose

To inform the General Contractors Association
about the City's Capital Improvements Program

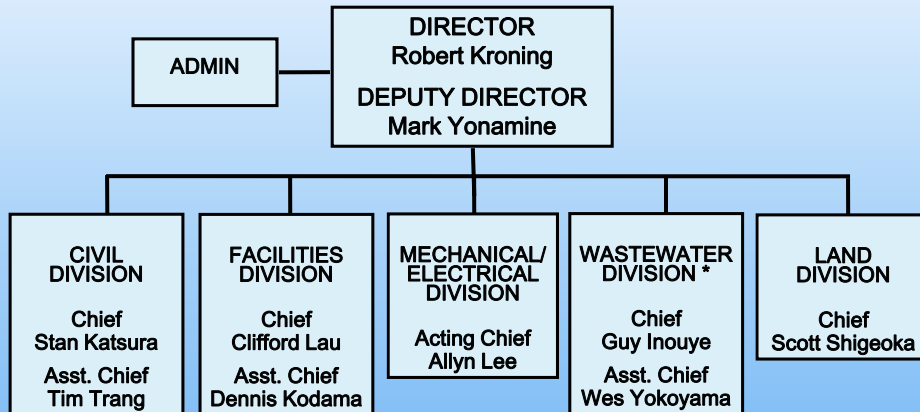


Mayor's Priorities

- Restore needed bus routes
- Build rail better
- **Wastewater upgrades**
- **Road paving**
- **Park improvements**
- Homelessness solutions

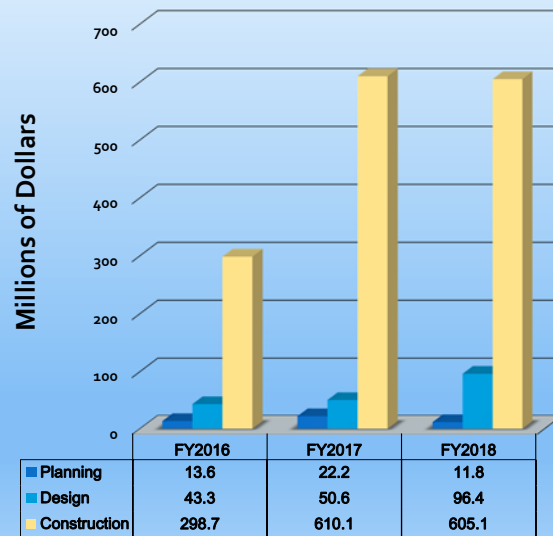


DDC Organization

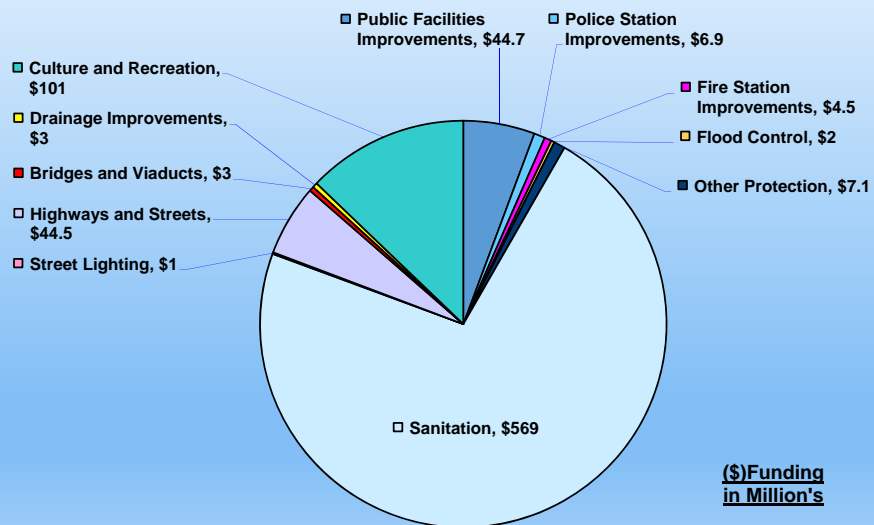


Mission Statement: To provide engineering expertise and advice to the City's program planning and perform project planning, design, construction, inspection, and land acquisition for public facilities of the City and County of Honolulu.

DDC's CIP By Fiscal Years



DDC's FY 2018 CIP Projects





**Facilities Division FY 2018
Upcoming Construction Projects**
(List subject to change)

- 51 Merchant Building - Spall Improvements
- Ala Moana Regional Park - Road, Parking Lots, Ewa Bathhouse, McCoy Pavilion, & Trellis
- Botanical Gardens & Urban Forestry Parking Lot Improvements
- Central Fire Station Historic Door improvements
- Design Build Play Apparatus (Hahaione Neighborhood Park, Kalakaua District Park, Puu O Hulu Community Park)
- Division of Urban Forestry (DUF) Admin & Arboriculture Relocation
- Enchanted Lakes Community Park Recreation Building Miscellaneous Repairs
- HFD Museum Bird Control & Security Improvements
- Honolulu Hale Exterior Spall Repair/Painting & Window Replacement
- Honolulu Zoo Improvements
- Hoomaluhia Botanical Gardens - Reconstruct Sewer Lines
- HPD Headquarters - Correct Building Leaks
- Kaimuki Municipal Parking Lot Improvements
- Kapolei Fire Station Personnel Quarters Improvements
- Kapolei Regional Park Skate Park & Lighting Improvements

**Facilities Division FY 2018
Upcoming Construction Projects**
(List subject to change)

- Koko Head Shooting Complex, Phase 2 (DPR Storage Shed Improvements)
- Kualoa Regional Park Maintenance Facility improvements
- Kuilei Cliffs & Beach Road Erosion/Rockfall Mitigative Improvements
- Makakilo Neighborhood Park Fencing
- Makiki Round Top Radio Communications Facility Improvements
- Medical Examiners Roof & Fence/Gate Improvements
- NPDES Improvements - Kaneohe & Kahuku Police Stations, Kaneohe & Kailua Fire Stations, & Ted Makalena Golf Course
- Ocean Safety Lifeguard Towers Replacement
- Patsy T. Mink Central Oahu Regional Park - Dog Obedience/Training Facility & Parking Lot Expansion
- Police Training Academy - Miscellaneous Pavement Improvements, Phase II
- Pupukea Beach Park Three Tables - Comfort Station Improvements
- Rock Fall & Erosion Mitigation Measures - Salt Lake District Park & Ala Puumalu Community Park
- Roof & Structural Improvements - Kalama Beach Park Comfort Station

**Facilities Division FY 2018
Upcoming Construction Projects**
(List subject to change)

- Roof Improvements - Crestview Community Park Recreation Center, Heeia Neighborhood Park Comfort Station, Kapolei Hale, Lanakila District Park Staff Office, & Manoa Valley District Park Gym (New)/Multi-Purpose Building
- Royal Hawaiian Band Facility Improvements
- Ted Makalena Golf Course - New Cart Paths, Phase V
- Thomas Square Park Improvements, Phase III
- Wahiawa Botanical Garden - Maintenance Building Renovation & Pedestrian Bridge Restoration
- Waikiki Shell Various Improvements
- Waipahu District Park Reroof Multipurpose Buildings 1 & 2
- Waipio Peninsula Soccer Park Stadium Bleacher & Various Repairs
- Walter Murray Gibson Building Improvements

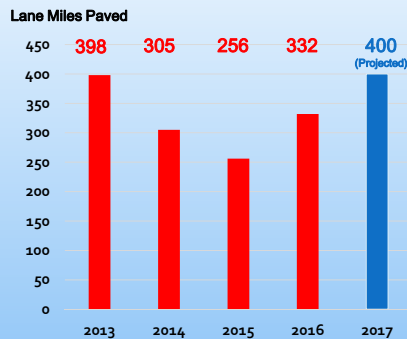
Aiea Ballfield Improvements



Civil Division FY 2018 Upcoming Construction Projects (List subject to change)

- Anapalau Street Channel Erosion Control Improvements
- Curb Ramps @ Various Locations
- Drainage Improvements – Anuenue St, Auyong Homestead Rd, Kawailoa Rd, Kionaole Rd, & Miller St
- Drainage Outfall Improvements - Aweoweo St & Portlock Rd
- Drainline Repair - 2695 Pacific Heights Rd
- Guardrail Improvements @ Various Locations
- Guardrail Replacement - Waipahu Street Bridge No. 2
- Kapiolani Blvd Double Box Culvert (#273) Bridge Rehabilitation
- Koko Drive Improvements
- North Kukui Street & Nuuanu Stream Area Improvements
- Rehabilitation of Streets @ Various Locations

Rehabilitation of Streets



- **Requirements v Priorities v Resources**
- **Survey and Pavement Condition Management:**
 - Right-of-Way imaging every two years (earthmine)
 - MicroPaver management system
 - Seal coats
- **Paving Challenges - Solutions:**
 - Shallow utilities – Consultant exploration
 - Poor subgrade – Reconstruction
 - New regulations (NPDES) – Training & Oversight
 - Conflict Management – Lokahi



Mechanical/Electrical Design Division FY 2018 Upcoming Construction Projects

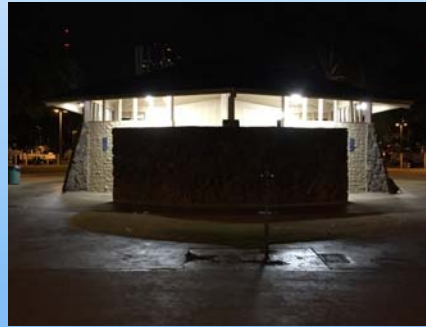
(List subject to change)

- 51 Merchant Building Improvements - Fire Alarm Replacement
- AC System Improvements - Ala Wai Golf Course Clubhouse, Phase 2 & Waipahu Maintenance Facility & Fire Training Center
- Aiea District Park Field Lighting Improvements
- Fasi Municipal Building Fuel Storage Tank Replacement
- Fuel Storage Improvements at Various Fire Stations
- Kahuku Police Station Fire Alarm System Improvements
- Medical Examiner's Office Refrigeration
- Pearl City Police Station Underground Storage Tank Conversion
- Photovoltaic Improvements at Various Corporation Yards
- Replacement of Fire Alarm Systems @ Various Parks, Phase IV
- Replacement of Street Light Meter Cabinets & Transformers, Phase IV
- Salt Lake District Park Swimming Pool Heating System Replacement
- Upgrade HPD Security Camera Systems at Kahuku, Waikiki Substation, East Honolulu Substation, & Waipahu Training Academy
- Waikiki Shell Upgrade Light Poles

Ala Moana Magic Island Comfort Station A

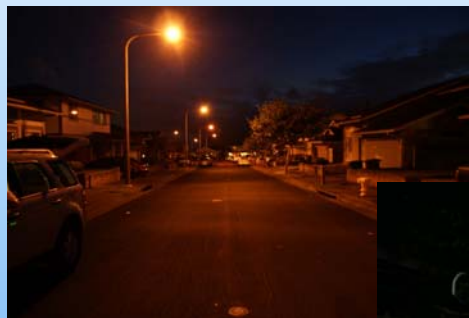


Before 2/14/2016



After Improvements

LED Street Lighting Conversion Project



Before



After



**Wastewater Division FY 2018
Upcoming Construction Projects**
(List subject to change)

- Ala Moana WWPS Upgrade
- Awa Street WWPS FM & Sewer System Improvements - Waiakamilo Road Trunk Sewer
- Dowsett Highlands Relief Sewer, Pali Highway (Wyllie Street to Nuuanu Pali Drive)
- Ewa Beach WWPS Force Main Improvements, Phase I
- Honouliuli WWTP Secondary Treatment
- Honouliuli WWTP Upgrade, Phase II
- Kailua WWTP Tunnel Influent Pump Station & Headworks Facility
- Kamehameha Hwy WWPS Force Main Improvements
- Kamehameha Hwy WWPS Upgrade
- Kaneohe/Kailua Sewer Tunnel
- Kunia WWPS Force Main Improvements
- Palolo Sewer Rehabilitation
- Pearl City WWPS, Force Main, & Sewer System Alternatives
- Sand Island WWTP Return Flow Treatment

Wastewater Division FY 2018 Upcoming Construction Projects

(List subject to change)

- Sewer I/I Relief & Rehabilitation Projects - Ala Moana Tributary Basin, Hart St Tributary Basin, & Windward Area
- Sewer Mainline & Lateral Projects
- Uwalu WWPS Upgrade
- Waianae WWTP Improvements/Upgrade, Phase I
- Wastewater Pump Station Electrical & SCADA
- Wastewater Treatment Plant, Pump Station, & Force Main Projects
- West Beach No. 1 & No. 2 WWPS & Force Main Systems Improvements
- Waipio WWPS Upgrade
- Windward Wastewater Facilities – Ground & Foundation Improvement

Honouliuli Wastewater Treatment Plant



Sand Island Wastewater Treatment Plant Secondary Treatment Ph 2



