

# General Contractors Association Construction Update



**August 18, 2015**

**Robert Kroning, Director**

**Department of Design and Construction  
City and County of Honolulu**



## Purpose

**To inform the General Contractors  
Association about the City's  
Upcoming CIP Program**

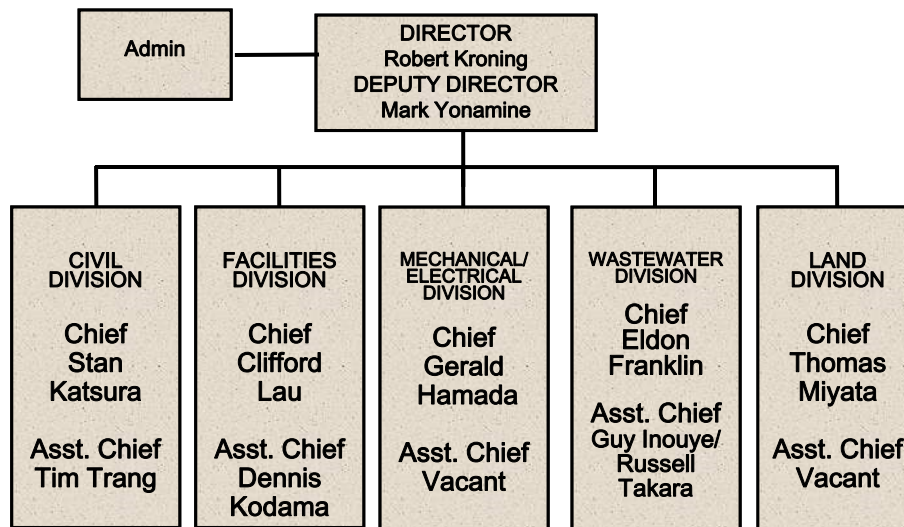


## Mayor's Priorities

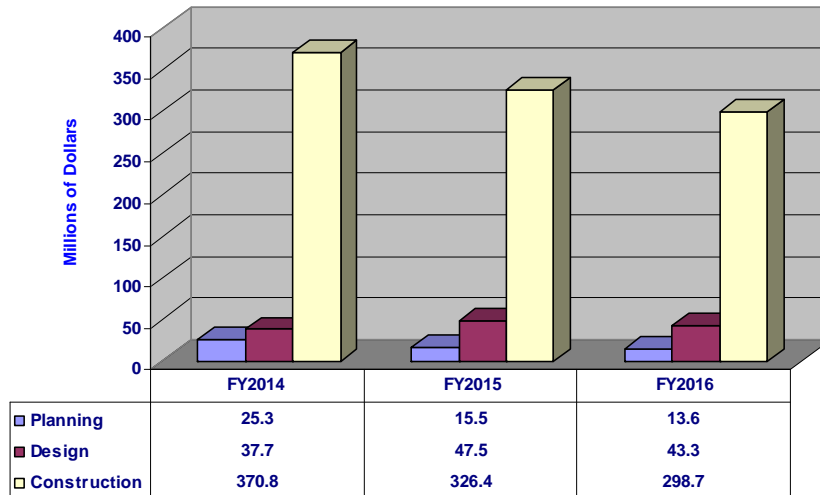
- Restore needed bus routes
- Build rail better
- Wastewater upgrades
- Road paving
- Park improvements
- Homelessness solutions



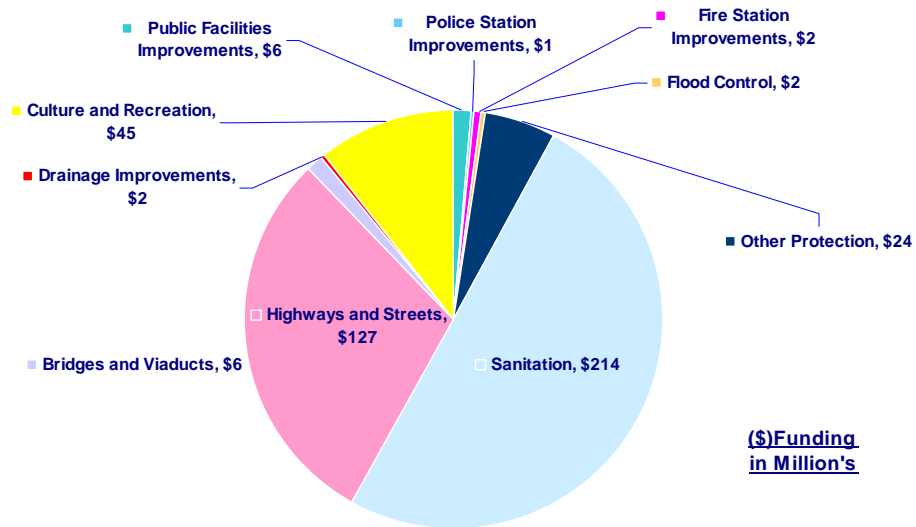
## DDC Organization Chart



## DDC's CIP By Fiscal Years



## DDC's FY 2016 CIP Projects





**Facilities Division FY 2016  
Upcoming Construction Projects**  
(List subject to change)

- Ala Moana Regional Park Improvements
- Central Fire Station Historic Door improvements
- City Hall Bathroom Renovations, Phase 1 (1st Floor)
- Enterprise Facilities Improvements
- Hanauma Bay Nature Preserve Faux Wall Structural Assessment
- Hanauma Bay Nature Preserve Rockfall Mitigative Improvements, Phase III
- Hauula Fire Station Relocation
- Heeia Neighborhood Park Comfort Station Roof Improvements
- Honolulu Hale Window Replacement, Phase III
- Hoomaluhia Botanical Gardens Reconstruct Sewer Lines
- Honolulu Police Department Headquarters Parking Structure, Correct Building Leaks
- Iwilei Health Facility Chain Link Fence, Automatic Opening Gate and Medical Examiners Roof Replacement
- Kaimuki Municipal Parking Lot Improvements
- Kalama Beach Park Comfort Station Roof and Structural Improvements
- Kuilei Cliffs Drainage and Rockfall Mitigation

**Facilities Division FY 2016  
Upcoming Construction Projects**  
(List subject to change)

- Kuilei Cliffs Drainage and Rockfall Mitigation
- Maili Beach Comfort Station Improvements, Phase II
- Manoa Valley District Park Gym (Old) Roof Improvements
- Pearl City District Park - Swimming Pool Concrete Spalling Improvements
- Pu'u O Hulu Community Park - Comfort Station
- Sandy Beach Comfort Station (Halona Blowhole Side of Park) Roof Improvements
- Thomas Square Park
- Wahiawa Botanical Garden Footbridge Restoration
- Waianae District Park Improvements
- Waianae District Park Multipurpose Room Roof Repairs
- Waipahu District Park Swimming Pool Pump Room Concrete Spalling Improvements
- West Loch Golf Course Club House Roof Improvements

**Blaisdell Center Master Plan**





### Civil Division FY 2016 Upcoming Construction Projects

(List subject to change)

- Bridge Rehabilitation at Various Locations (Nehoa Street Box Culvert, Halawa Crusher Road, Komo Mai Double CMP Culvert)
- Curb Ramps at Various Locations, Oahu
- Drainage Improvements at Various Locations (Miller Street, Papipi Road)
- Farrington Highway Bridge Improvement
- Flood Control Improvements at Various Locations (Waihee Stream, Manoa Stream, Pokai Bay Ditch)
- Guardrail Improvements
- Highway Structure Improvements
- Kapiolani Boulevard Double Box Culvert Improvements
- North King Street Bridge Improvements
- Rehabilitation of Streets
- Rock Slide Potential Inspections & Mitigative Improvements

# Haleiwa Improvement District



MAY 2015

**HONOLULU COMPLETE STREETS  
IMPLEMENTATION STUDY LOCATION REPORT**

**Kaliakaua Avenue from Kapiolani Boulevard to Ala  
Wai Boulevard (DRAFT I)**

City & County of Honolulu  
Department of Transportation Services

**SPTM**  
Sustainable Planning  
Transportation  
Management







**Mechanical/Electrical Design Division  
FY 2016 Upcoming Construction Projects**

(List subject to change)

- Fire Station Emergency Vehicle Caution System (EVCS) Upgrade - Kalihi Kai
- Generator & Electrical Improvements at Various Fire Stations (Manoa and Olomana)
- Hanauma Bay Air Conditioning System Improvements
- Makiki District Park Air Conditioning System Improvements
- Replacement of Fire Alarm Systems at Various Parks, Phase III





**Wastewater Division FY 2016  
Upcoming Construction Projects**  
(List subject to change)

- Ahuimanu Wastewater Preliminary Treatment Facility Force Main
- Chinatown Sewer Rehabilitation
- Halawa Wastewater Pump Station Force Main System Improvements
- Honouliuli Wastewater Basin Odor Control
- Kahanahou Wastewater Pump Station Upgrade and Sewer Improvements
- Kailua Rd. Wastewater Pump Station Force Main System Improvements
- Kailua Wastewater Treatment Plant Upgrade, Phase II
- Kamehameha Highway Wastewater Pump Station Upgrade (Mapunapuna)
- Sand Island Wastewater Basin Odor Control
- Sand Island Wastewater Treatment Plant Outfall Improvements/Rehabilitation
- Uwalu Wastewater Pump Station Upgrade
- Waianae Wastewater Treatment Plant Improvements/Upgrade
- Waikalua Wastewater Pump Station Upgrade and Alternative Diversion Sewer
- Waikapoki Wastewater Pump Station Upgrade
- Waipio Wastewater Pump Station Upgrade

Honouliuli Wastewater Treatment Plant



Sand Island Wastewater Treatment Plant  
Secondary Treatment Ph 2

